



## Lightweight Aluminium Mast - Wire Antennas

Bushcomm offers a range of economical towers to position your antenna for optimal radio performance. The range includes different heights, mounts, stainless steel and Polyester guy ropes. Available in 6, 10 and 12 metre heights.

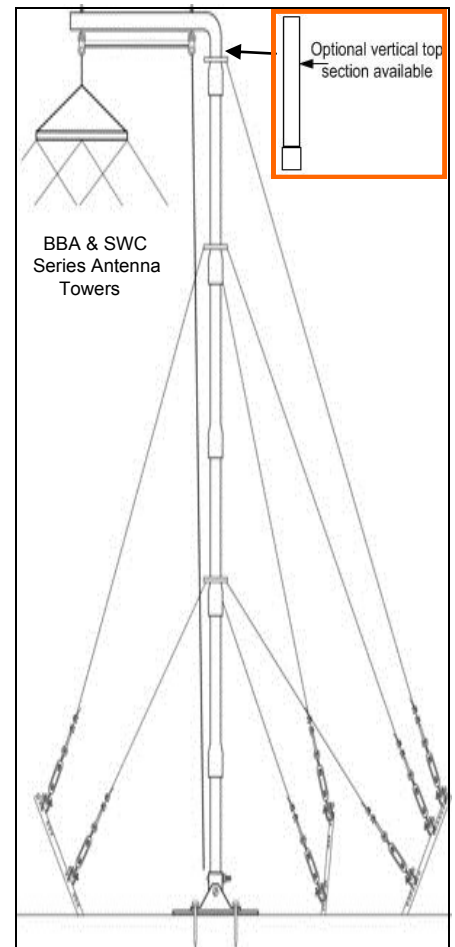
Bushcomm towers are all aluminium construction for strength and light weight. The Towers are air transportable, yet capable of withstanding significant winds. Maximum shipping length is only 2100mm packed.

A single tower is designed to support multiwire (BBA series) or single wire (SWC series) antennas in the inverted "V" configuration. This minimises the physical footprint and enhances NVIS and medium distance performance.

Alternatively, two towers can be erected to support a wire antenna in a horizontal configuration to improve longer distance propagation characteristics.

Choose from our ground mount or roof mount models available in either 10m or the extra tall 12m variants, both secured with rugged 3.2mm G304 stainless steel wire. Ground mount polyester rope guyed models are also available.

Generally only two people are required to erect the ground mount masts. The 12m tower includes a falling derrick to assist in erection.



### SPECIFICATION 10M Roof Version. #TOW1 - Roof Mount with steel guy wires.

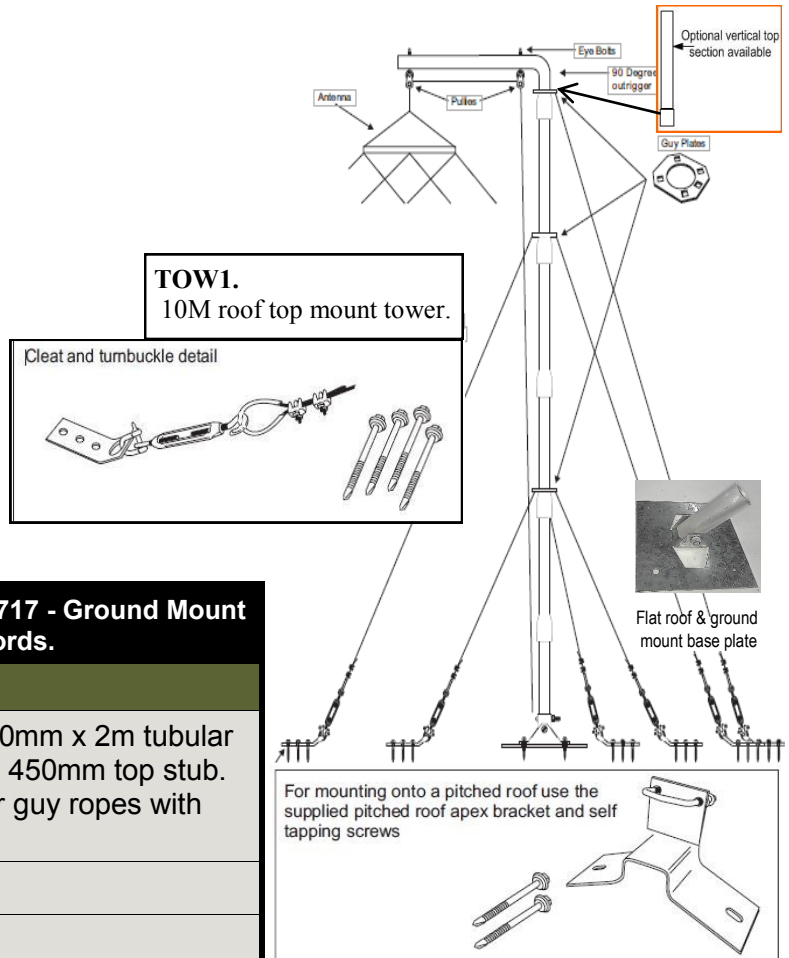
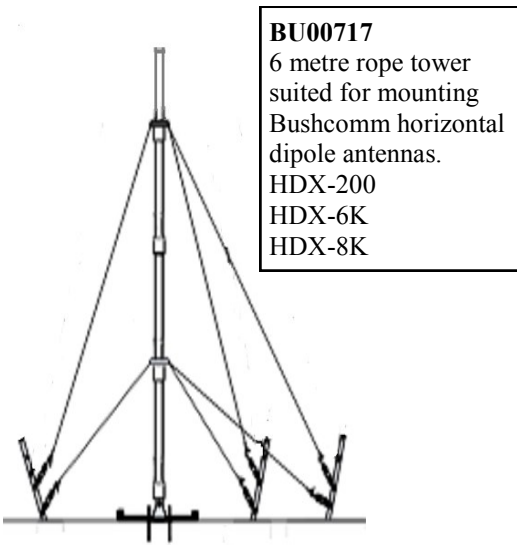
#### MECHANICAL

<b>Material</b>	<ul style="list-style-type: none"> <li>★ 5 sections of 50mm x 2m tubular aluminium mast</li> <li>★ Bent top outrigger section</li> <li>★ 3.2mm G304 Stainless steel guy wires with insulators</li> <li>★ Heavy duty roof cleats and roof plate. Ridge version plate available</li> </ul>
<b>Height</b>	10m
<b>Shipping Weight</b>	19.3kg

### SPECIFICATION 10M Ground Version. #TOW2 - Ground Mount with Polyester guy cords.

#### MECHANICAL

<b>Material</b>	<ul style="list-style-type: none"> <li>★ 5 sections of 50mm x 2m round tubular aluminium mast</li> <li>★ Bent top outrigger section</li> <li>★ 6mm UV resistant polyester guy cords with tensioners</li> <li>★ Heavy duty swivel plate and guy stakes supplied.</li> </ul>
<b>Height</b>	10m
<b>Shipping Weight</b>	27 kg



<b>SPECIFICATION</b>	<b>6M Version. #BU00717 - Ground Mount with Polyester guy cords.</b>
<b>MECHANICAL</b>	
<b>Material</b>	<ul style="list-style-type: none"> <li>★ 3 sections of 50mm x 2m tubular aluminium and 450mm top stub.</li> <li>★ 6mm Polyester guy ropes with tensioners</li> </ul>
<b>Height</b>	6.45m
<b>Shipping Weight</b>	24.2kg

<b>SPECIFICATION</b>	<b>10M Version. #TOW3 - Ground Mount with steel guy wires.</b>
<b>MECHANICAL</b>	
<b>Material</b>	<ul style="list-style-type: none"> <li>★ 5 sections of 50mm x 2m round tubular aluminium mast</li> <li>★ Bent top outrigger section</li> <li>★ 3.2mm G304 Stainless steel guy wires with insulators</li> <li>★ Heavy duty swivel plate and guy stakes supplied.</li> </ul>
<b>Height</b>	10m
<b>Shipping Weight</b>	28.3kg

<b>SPECIFICATION</b>	<b>12M Heavy Duty. #TOW4 - Ground Mount with steel guy wires.</b>
<b>MECHANICAL</b>	
<b>Material</b>	<ul style="list-style-type: none"> <li>★ 6 sections x 2m tubular aluminium mast - H/Duty 4mm wall thickness</li> <li>★ Bent top outrigger section</li> <li>★ 3.2mm G304 Stainless steel guy wires with insulators Heavy duty swivel plate and guy rope stakes supplied.</li> </ul>
<b>Height</b>	12m
<b>Shipping Weight</b>	38kg